

Oldfield Primary School

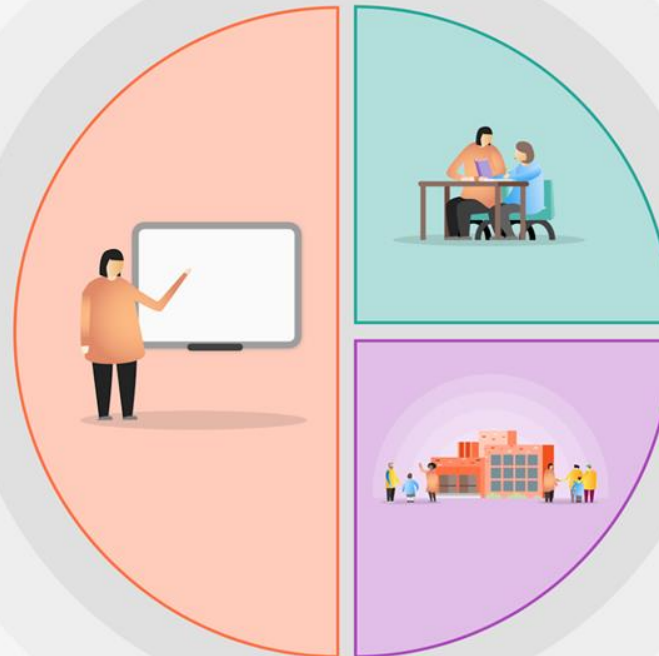
Pupil Premium Tiered Model

Oldfield Primary School is dedicated to providing a quality education for all. Our priority is to ensure that our whole-school ethos, alongside Quality First Teaching, creates a climate where our children have the opportunity to thrive.

With targeted support and wider strategies in place, every child has the opportunity to reach their highest potential

1. Whole School/Teaching

- Teaching staff trained in 'Maths No Problem' Maths Mastery approach.
- Head is a Maths Hub advocate supporting the 'Teaching for Maths Mastery' approach and delivery at Oldfield and other schools.
- The Literacy Company support teachers to plan all units in line with a mastery approach.
- Subject leaders access training relevant to their role.
- Targeted CPD
- Rigorous phonics programme in place across KS1
- Whole staff training in phonics
- Book analysis to identify areas for development/focus.
- Enquiry based curriculum to encourage interaction, engagement and critical thinking.
- Trauma Informed Behaviour system and approach introduced to promote positive relationships.
- Times Tables Rockstars for all pupils from Year 3.
- Numbots application for learning key concepts in maths.
- RSE & Health, PSE/SMSC equality based curriculum, fully inclusive and planned for delivery.
- Feedback approach in situ directly to the pupils
- Bug Club online reading programme
-



2020 - 2021

2. Targeted Academic Support

- Same day maths interventions.
- Phonics interventions
- Pre and over learning opportunities
- Reading interventions
- Coaching and motivational interviewing
- In class, targeted support from Teaching Assistants
- Pupil Progress meetings to identify key pupils in need of support
- Continual feedback loop for targeted support
- Electronic devices to support alternative forms of recording and engaging in learning
- Precision teaching in spelling, reading, writing
- Harper Collins reading scheme books linked to our phonics programme

3. Wider strategies

- Social skills groups, Lego therapy, Sensory diets, life skills,
- Access to quiet areas of the classroom and school
- ELSA support
- PSHE Association programme
- Forest Schools
- Art therapy
- Attachment Friendly School
- Buddies
- Free before and after school clubs
- Financial support for trips
- Financial support for music tuition
- Our Ways of Working (Trauma Informed Practice) school
- Passion for Learning nurture
- Family support (TAFs and informal)
- Parenting courses
- Emotionally Based School Non-Attendance approach
- Pivotal behaviour approach
- Breakfast and snack provision
- First News newspaper
- Mental Health staff training